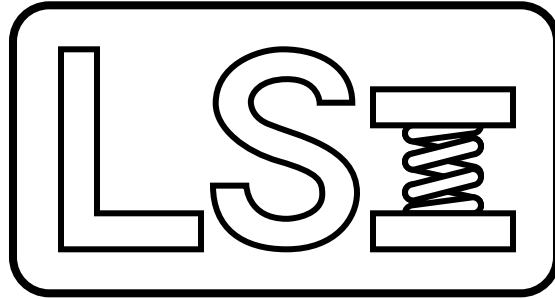


Larson Systems Inc.



DHT Parts List

050-0000-0021-00

Digital Hand Tester - 750 lb





050-0000-0021-00 J
DHT - 750 lb

Parts List

Rev	By	Date	Description
F	SMH	11-12-2001	025-1000-0280-01 was 011-0000-0009-00, added 025-0000-0488-00, now on Excel
G	DAL	10-30-2002	Added 060-2000-0015-04
H	MDL	11-05-2002	Added 025-6000-0004-00, cleared options
J	MDL	07-14-2004	Changed 025-1000-0280-01 to 025-1000-0396-00 and referenced it instead of calling quantity.

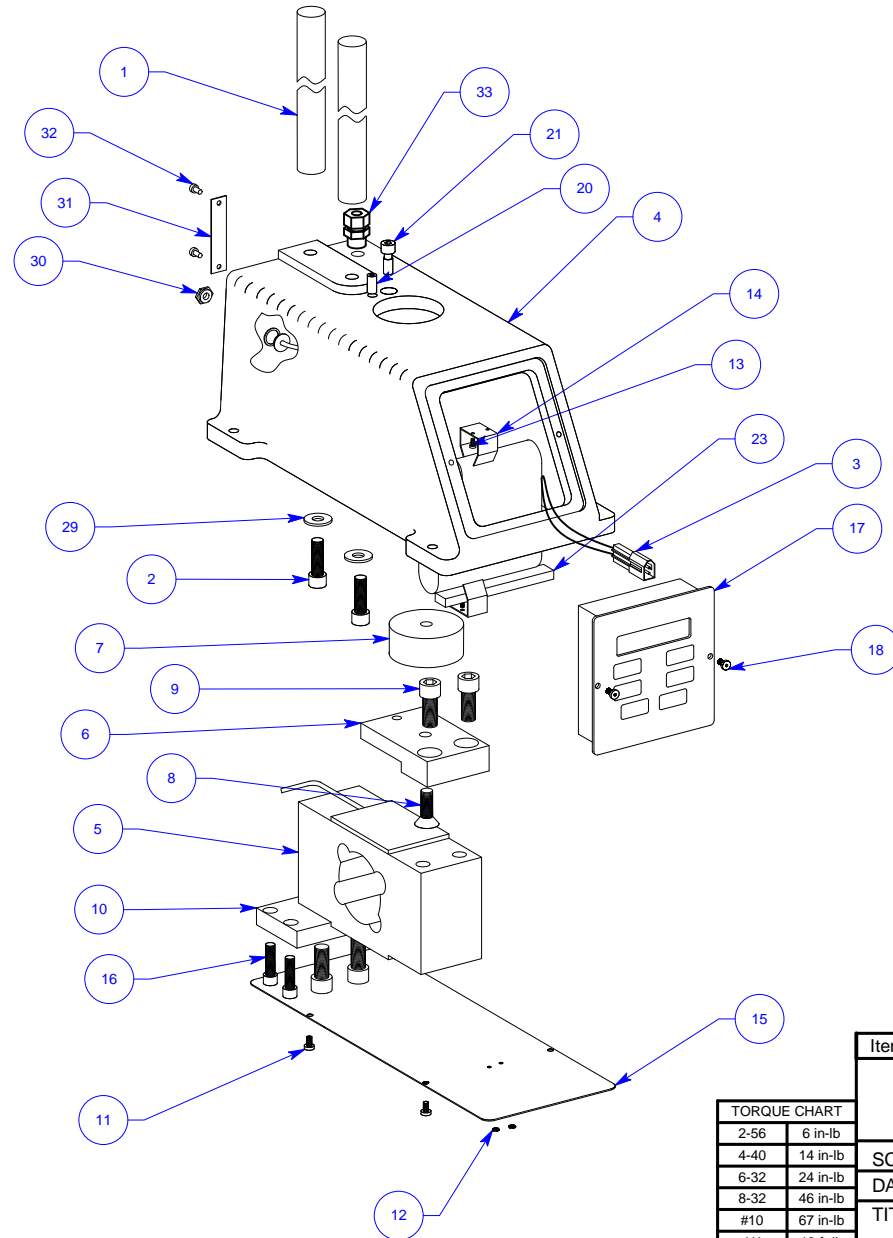
Item	Qty	Part Number	Rev	Part Name	PCB Location	Part Length
1	ref	025-1000-0396-00		Power Supply, 100-240 VAC 50-60 Hz (USA Plug)		in.
2	1	025-0000-0167-00	S	Lower Assembly DHT 750 lb		in.
3	1	025-0000-0185-00	G	Upper Assembly 6" DHT		in.
4	1	060-1000-0025-00	K	User Manual - ECT / CDHT / FDHT / DHT / CST		in.
5	1	060-0000-0074-00	A	Tester Packet Forms		in.
6	1	059-0000-0016-00	E	Hand Tester Shipping Box & Materials		in.
7	1	060-2000-0015-04		Parts List - DHT 750 lb		in.
8	1	025-6000-0004-00		Sticker Assembly - DHT		in.

Refer to actual order form to determine power supply.

Approved by: 

Date: July 19, 2004

REV	DATE	DESCRIPTION	DRW	APPR
		SEE SHEET 2		



NOTE
 1. ADD ITEM #23 OVER THE TOP OF SCREWS ON THE LOWER BATTERY CLIP
 GRIND SCREWS FLAT ON THE OPPOSITE SIDE
 2. TORQUE ALL BOLTS TO TORQUE CHART VALUES UNLESS OTHERWISE NOTED

TORQUE CHART	
2-56	6 in-lb
4-40	14 in-lb
6-32	24 in-lb
8-32	46 in-lb
#10	67 in-lb
1/4	13 ft-lb
5/16	26 ft-lb
3/8	47 ft-lb
1/2	117 ft-lb

Item	Qty	Description	LSI P/N
LARSON SYSTEMS INC.			
SCALE: NONE		TOLERANCE: .XX +/- .01	DRW. BY: DD
DATE: 9/6/95		.XXX +/- .005	APPR. BY:
TITLE: DHT 750 lbs, LOWER ASSEMBLY			
MATERIAL:		SHEET 1 OF 2	DRAWING NUMBER
FINISH:		B	025-0000-0167-00S



025-0000-0167-00 S

Parts List

Lower Assembly DHT 750 lb

Rev	By	Date	Description
P	SMH	10-30-2002	ADDED ITEMS 12-14 AND 23 BACK TO PRINT, CHANGED ITEM 1 BACK TO 18-0-907-01
Q	SMH	12-09-2002	REM'D #19 , 22 AND 28, #30 18-0-2160 WAS 18-0-1301, #32 13-0-178 WAS 13-0-20, #17 25-0-482-01 was 25-0-482-00
R	DAL	01-09-2003	ITEM 3 WAS 25-1000-251-00, 5 WAS 25-1000-172-02, 6 WAS 18-0-1100-00, 7 WAS 18-0-1101-00
S	RRS	09-13-2013	Item 17 was 025-0000-0482-01, is 025-0000-0482-00

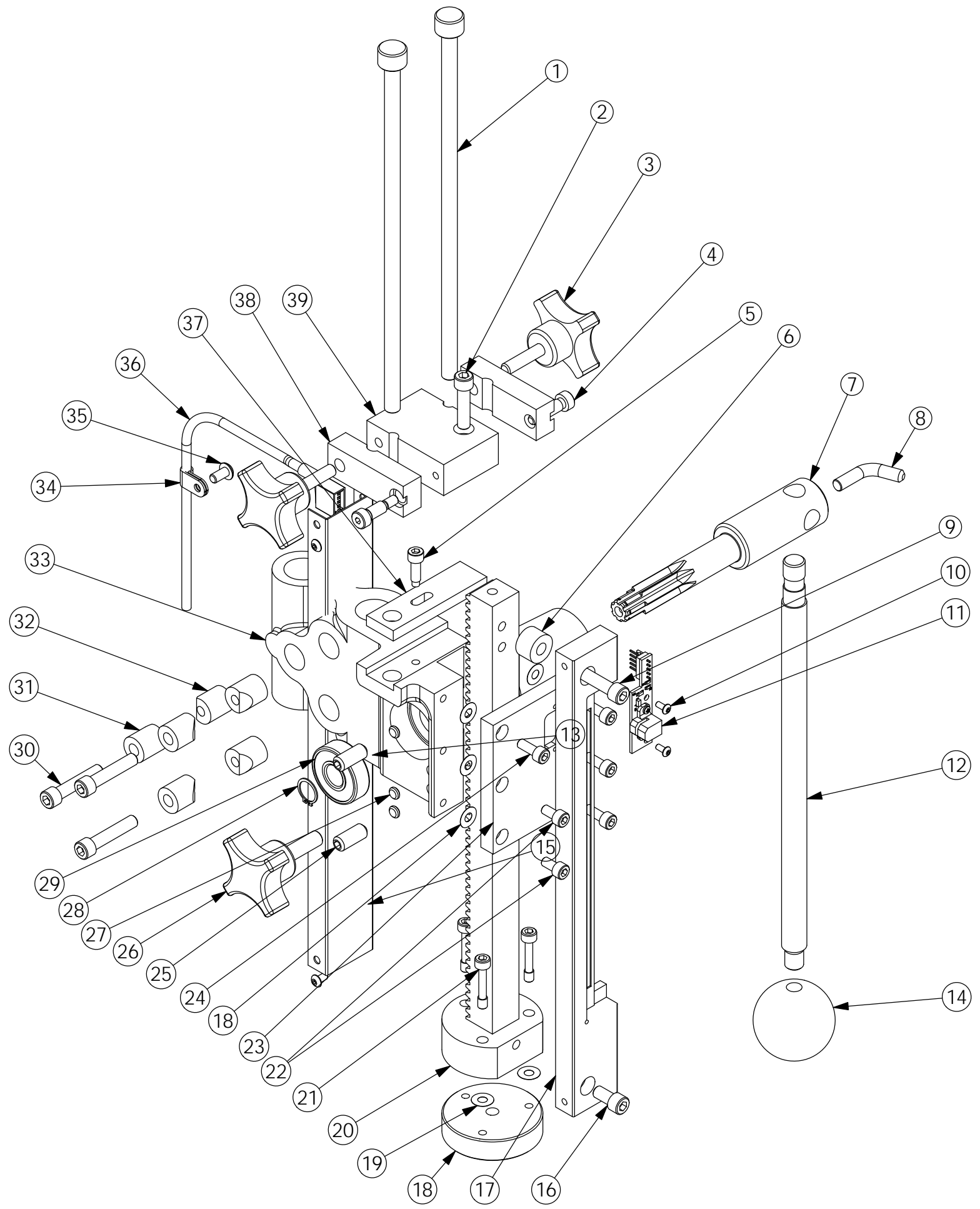
Item	Qty	Part Number	Rev	Part Name	PCB Location	Part Length
1	2	018-0000-0907-01	N	17.200" Support Rods (12" Range)		in.
2	2	013-0000-0154-00		5/16-18 X 1 1/4 SHCS		in.
3	1	025-1000-0240-00	Q	Rechargeable Battery, 6V, SDHT, molex connector		in.
4	1	018-0000-0871-02	Y	DHT Base - Blue		in.
5	1	025-1000-0172-03	Q	750 lb Load Cell Assembly		in.
6	1	018-0000-0903-02	C	Lower Platform Mounting Plate (DHT)		in.
7	1	018-0000-0905-00	C	2" DIA Lower Platform		in.
8	1	013-0000-0053-00		5/16-18 X 3/4 Flat Head Cap Screw		in.
9	4	013-0000-0206-00		M10-1.5 X 22 mm SHCS		in.
10	1	018-0000-0902-02	D	Load Cell Mounting Plate (DHT)		in.
11	4	013-0000-0195-00		6-32 X 1/4 Phillips Pan Machine Screw		in.
12	2	013-0000-0185-00		2-56 Hex Machine Screw Nut, Zinc		in.
13	4	013-0000-0184-00	A	2-56 X 1/8 PHMS, PHILLIPS		in.
14	2	011-2000-0002-00		Keystone 222 / Battery Holder		in.
15	1	018-0000-0877-00	E	Base Bottom Cover		in.
16	4	013-0000-0149-00		1/4-28 X 7/8" SHCS		in.
17	1	025-0000-0482-00	M	FP Assy, 2 Line Display (force/length)(6.9-15.8 mv		in.
18	2	013-0000-0077-00		6-32 X 1/4 BHCS		in.
20	1	013-0000-0194-00		1/4-28 X 1/2 SSS FLAT POINT		in.
21	1	018-0000-1302-00	A	Compression Overload Stops		in.
23	1	013-7000-0007-00		White Foam Tape 3.5' X .5" X .25"		in.
29	2	018-0000-1514-00		WASHER .320 I.D. X .625 O.D.		in.
30	1	018-0000-2160-00	A	Power Jack Nut / Insulator		in.
31	1	018-0000-2014-00		25 PIN COVER PLATE		in.
32	2	013-0000-0178-00		4-40 X 1/4 SHCS		in.
33	1	013-3000-0022-00		Nylon Liquid-Tight Cord Grip Fitting, Straight Dome,		in.


Approved by: *Dal & Zam*

Date: September 16, 2013

SEE ATTACHED DRAWING

REV.	DATE	DESCRIPTION	DRW	APPROVED
		Revision list in Filemaker		



UNLESS OTHERWISE SPECIFIED DIMENSIONS ARE IN INCHES TOLERANCES ARE: .XX ± .01 .XXX ± .005	 LARSON SYSTEMS INC. 10073 Baltimore St. NE PH. 763-780-2131 Mpls., MN 55449 FAX. 763-780-2182	
APPROVALS DRAWN SMH 9/10/01 APPR.		DATE 9/10/01
DHT Upper Assembly DWG. NO. B 025-0000-185-00G		SCALE: NONE SHEET 1 OF 3



025-0000-0185-00 G

Parts List

Upper Assembly 6" DHT

Rev	By	Date	Description
E	SMH	09-10-2001	REMOVED OLD SCALE REPLACED WITH NEW ENCODER, ASSEMBLY DONE IN SOLIDWORKS
F	SMH	12-11-2001	CHANGE SCALE OVER TO 025-0000-484, ADDED OTHER ITEMS DELETED FOR 025-0000-484
G	DAL	11-03-2012	Renumbered Balloons, #30 was 013-0000-0098-00 is 013-0000-0065-00, #24 013-0000-0196-00 was 3 ea is 4 ea, #22 013-0000-0192-00 was 3 ea is 2 ea, #36 025-1000-0352-01 was 025-0000-0352-00
	SMH	09-10-2001	

Item	Qty	Part Number	Rev	Part Name	PCB Location	Part Length
1	2	018-0000-1063-01	C	Stop Rods, 8.75		in.
2	1	013-0000-0064-00		1/4-20 X 1 SHCS		in.
3	2	013-5000-0059-00		1/4-20 knob		in.
4	2	013-0000-0204-00		1/4 X 1/2 SHSS, SHOULDER SCREW 10-24TH		in.
5	1	018-0000-1024-00	B	SHSC REWORK/DHT		in.
6	1	018-0000-2222-00		ENCODER SPACER		in.
7	1	018-0000-0876-00	A	Stem Pinion		in.
8	1	018-0000-2214-00	A	Handle Lock, 1/4-20		in.
9	1	013-0000-0202-00		1/4-20 X 7/8 SHCS		in.
10	2	013-0000-0020-00		4-40 X 1/4 BHCS		in.
11	1	025-1000-0351-00	A	Encoder PCB Assembly		in.
12	1	018-0000-0901-00	C	Handle - 5.84" (2, 10 lb Hand Tester)		in.
13	1	018-0000-2217-00	B	Encoder Cover		in.
14	1	013-5000-0029-00		Phenolic Ball Knob		in.
15	4	013-0000-0077-00		6-32 X 1/4 BHCS		in.
16	1	013-0000-0031-00		1/4-20 X 1/2 SHCS		in.
17	1	025-0000-0484-00	B	Glass Scale Assembly		in.
18	1	018-0000-1044-00	C	2" DIA Upper Platform		in.
19	9	018-0000-0435-01	C	Shim - 0.195 ID, 0.450 OD, 0.0010 thick		in.
20	1	018-0000-1249-06	P	ECT / CDHT / DHT Gear Rack		in.
21	3	018-0000-1732-02	B	10-32 Custom Screws for Platform Alignment		in.
22	2	013-0000-0192-00		10-32 X 3/8 SHCS		in.
23	1	018-0000-2218-00	B	Front Plate (for LSI Encoder)		in.
24	4	013-0000-0196-00		10-32 X 1/2 SHCS		in.
25	2	013-0000-0242-00		5/16-18 X 3/4 SSSCPPT		in.
26	1	018-0000-2221-00	A	Rack Lock, 5/16-18		in.
27	3	018-0000-1036-00	A	Brass Wear Pad		in.
28	1	013-2000-0086-00		Snap Ring, 5100-46-PP		in.
29	1	013-2000-0080-00		Bearing, Hand Tester Housing		in.
30	3	013-0000-0065-00		1/4-20 X 1 1/4 SHCS		in.

Approved by: _____

Date: _____

SEE ATTACHED DRAWING



025-0000-0185-00 G

Parts List

Upper Assembly 6" DHT

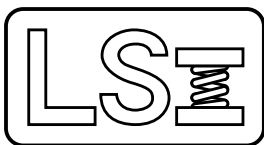
Rev	By	Date	Description
E	SMH	09-10-2001	REMOVED OLD SCALE REPLACED WITH NEW ENCODER, ASSEMBLY DONE IN SOLIDWORKS
F	SMH	12-11-2001	CHANGE SCALE OVER TO 025-0000-484, ADDED OTHER ITEMS REQUIRED FOR 025-0000-484
G	DAL	11-03-2012	Renumbered Balloons, #30 was 013-0000-0098-00 is 013-0000-0065-00, #24 013-0000-0196-00 was 3 ea is 4 ea, #22 013-0000-0192-00 was 3 ea is 2 ea, #36 025-1000-0352-01 was 025-0000-0352-00
	SMH	09-10-2001	

Item	Qty	Part Number	Rev	Part Name	PCB Location	Part Length
31	3	018-0000-1042-00	A	Locking Clamp #1 (Hand Tester)		in.
32	3	018-0000-1043-00	B	Locking Clamp #2 (Hand Tester)		in.
33	1	018-0000-0872-02	M	Rack Housing, Hand Tester		in.
34	1	013-3000-0023-00		Cable Clamp, 3/16" Dia.		in.
35	1	013-0000-0052-00		10-32 X 3/8 BHSCS		in.
36	1	025-1000-0352-01	B	Encoder Cable Standard DHT		in.
37	1	018-0000-1023-00	B	Sliding Stop Block		in.
38	2	018-0000-1062-00	A	Top Support Clamp		in.
39	1	018-0000-1022-00	G	TOP STOP SUPPORT/DHT		in.

Approved by: _____

Date: _____

SEE ATTACHED DRAWING



Larson Systems Inc.
10073 Baltimore Street NE
Minneapolis, MN 55449-4425
www.larsonsystems.com

763-780-2131
1-877-780-2131
Fax: 763-780-2182
info@larsonsystems.com

