



Larson Systems Inc.

13847 Aberdeen Street NE
Ham Lake, MN 55304-6789
www.larsonsystems.com

Phone: 763-780-2131
Fax: 763-780-2182
Email: info@larsonsystems.com

Installation Instructions - USB to DB9/DB25 Serial Adapter

Driver Installation

Windows 7 / Vista / XP / Server 2003 / Server 2008 R2

1. Turn the computer on and boot into Windows. *Do not have the USB adapter plugged into the computer.*
2. Insert the driver CD into your CD/DVD drive. If AutoPlay runs, then choose "Browse the CD", otherwise access the contents of the CD via "My Computer".
 - a. Open the folder for model ICUSB232DB25.
3. In the "Prolific/PL2303X" location, open the appropriate folder for your operating system and run the "Setup.exe" file. This will launch the driver installation wizard.
4. Once the installation wizard completes, the drivers are installed and ready for use.

Hardware Installation

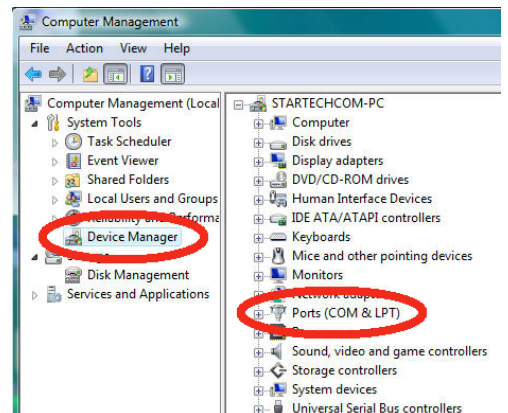
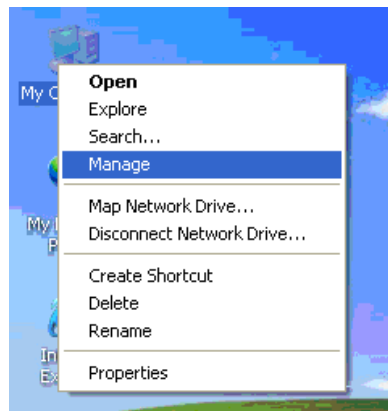
1. Make sure the driver installation has been completed first.
2. Plug the USB adapter into an available USB port on the computer system.
3. Windows will automatically detect the USB adapter and install the drivers.
4. Once installation is complete, the serial port will be ready for use.
5. If connecting the serial port to a DB25 interface, use the included DB9 to DB25 (male) adapter.

Verifying Installation

From the main desktop, right-click on "My Computer" ("Computer" in Windows 7 / Vista), then select "Manage".

In the new "Computer Management" window, select "Device Manager" from the left panel.

Double-click on the "Ports (COM & LPT)" option. The additional COM port should be visible



The COM port added will be the COM port used in the SDC (Spring Data Collector) software.