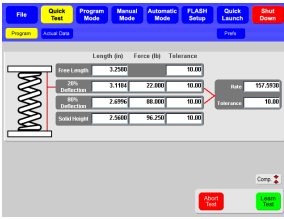
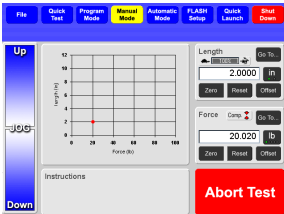


The Flash Interface



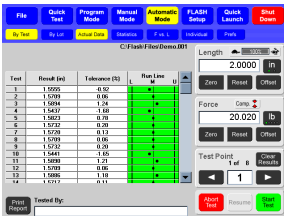
Quick Test

This is spring testing at its easiest — no programming required! Simply place your part, push the Learn button, and the FLASH automatically calculates free length, solid height, and 20% and 80% deflection. Descriptive graphics and graphs enhance the Quick Test experience.



Manual Mode

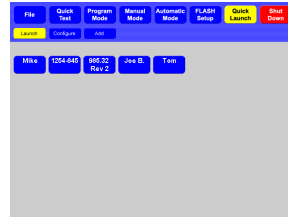
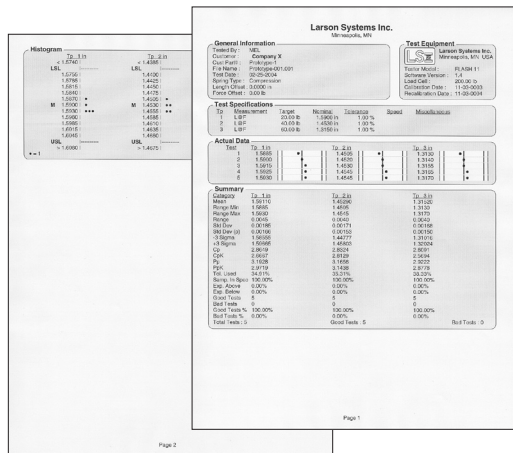
With a new intuitive jog switch and "Go To" button, Manual Mode allows you to manipulate the platform to any length or force you specify within seconds.



Automatic Mode

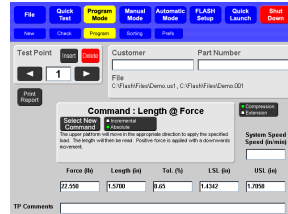
The FLASH Automatic Mode offers completely flexible testing options. View information by test or by lot. Statistical graphs, X-bar, range graphs and more!

Comprehensive Printed Reports



Quick Launch

Imagine a tester capable of quickly handling two or more unique tests at the same time. Now switch to Quick Launch and you're there! Easily switch between different users' tests or revision levels with a few quick touches and back again. Now, interrupting "this will be just a minute" tests really are "just a minute".



Program Mode

Complete testing sequences for Automatic Mode are programmed here, and include the test commands, sorting options and other preferences.

FLASH Software Packages						
Feature Description	Basic	Extra	Pro Spring	Fatigue Testing	Pro Material	Pro Ultimate
Quick Test	*	*	*			*
Quick Launch	*	*	*			*
Manual Mode	*	*	*			*
Program Mode	*	*	*			*
Automatic Mode	*	*	*			*
Single Load Cell Capability	*	*	*			*
Dual Interchangeable Load Cell Capability		*	*			*
Full Range Interchangeable Load Cell Capability		*	*			*
Absolute Programming	*	*	*			*
Incremental Programming		*	*			*
Graphic Displays: F vs. L Chart, Individuals Chart, X-Bar/R Chart and Histogram Chart		*	*			*
Statistics Reporting		*	*			*
Report Printouts		*	*			*
Up to 2 Point Testing	*	*	*			*
Up to 10 Point Testing	*	*	*			*
Up to 99 Point Testing	*	*	*			*
Compression / Extension Testing	*	*	*			*
Program Saving / Retrieving	*	*	*			*
Conditional Testing & Sorting (Set & Test to Tolerance)	*	*	*			*
Length / Force Offsets	*	*	*			*
Fatigue Testing: Preset type move up to 9,999,999 cycles		*	*	*		*
Fatigue Testing: Archiving data during cycling to file on hard drive		*	*	*		*
Fatigue Testing: Nominal and tolerance specifications to allow cycling to stop early		*	*	*		*
Dynamic Testing - Force, Length & Time		*	*	*		*
Test Commands		*	*	*		*
Test Command: Length @ Force	*	*	*			*
Test Command: Force @ Length	*	*	*			*
Test Command: Preset	*	*	*			*
Test Command: Free Length	*	*	*			*
Test Command: Initial Tension	*	*	*			*
Test Command: Rate	*	*	*			*
Test Command: Peak	*	*	*			*
Test Command: Pause	*	*	*			*
Test Command: Delay	*	*	*			*



Larson Systems Inc.
10073 Baltimore Street NE
Minneapolis, MN 55449-4425

763-780-2131
877-780-2131
763-780-2182 (Fax)

info@larsonsystems.com
www.larsonsystems.com



060-6000-0078-00A