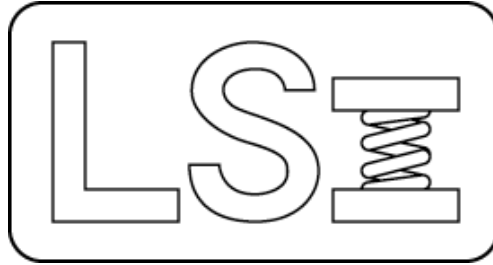


Larson Systems Inc.



Super Sorter Parts List

050-0000-0116-00





050-0000-0116-00

Parts List

Super Sorter Assembly (Base with load cell, software)

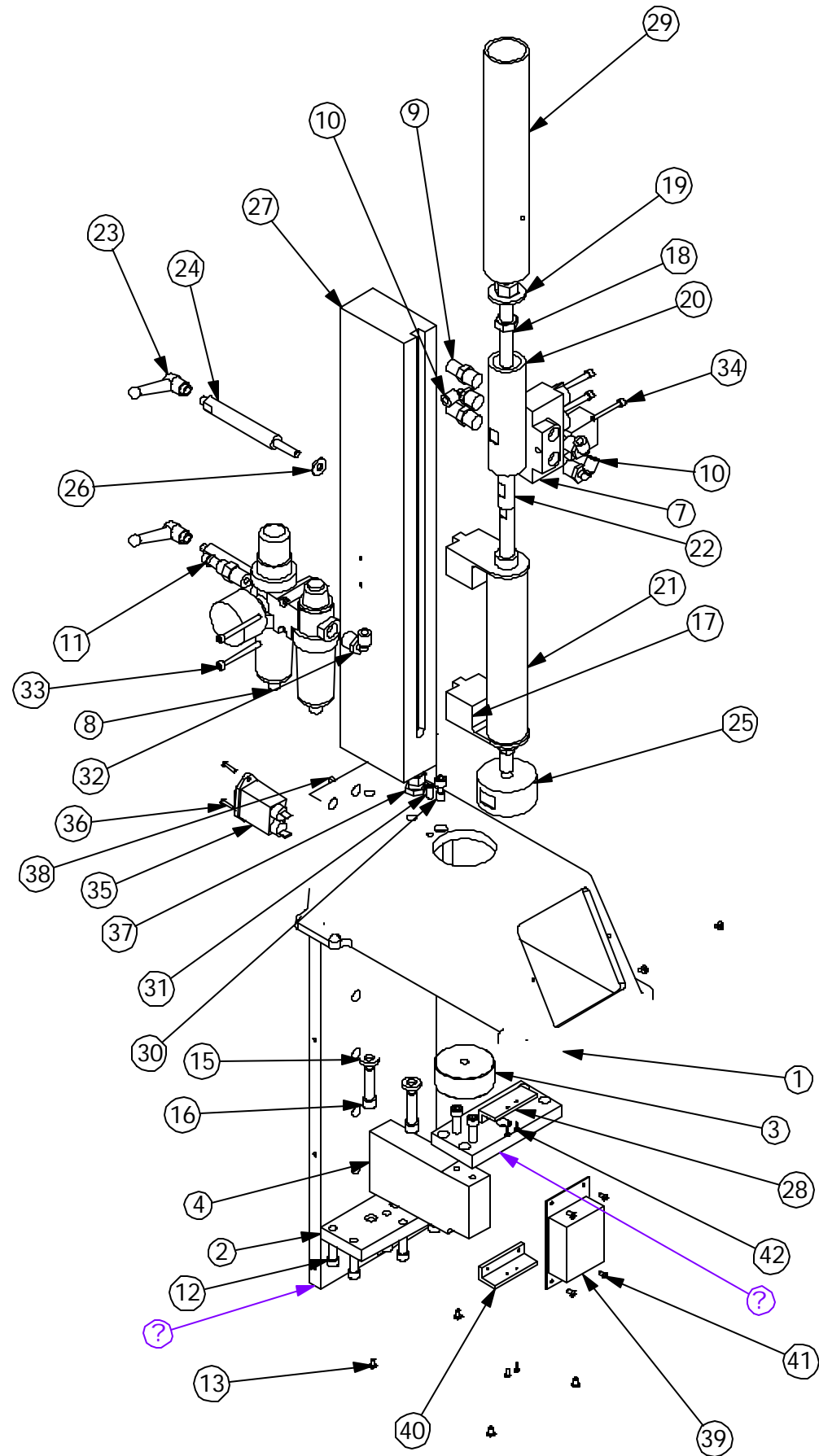
Rev	By	Date	Description

Item	Qty	Part Number	Rev	Part Name	PCB Location	Part Length
1	1	025-6000-0019-00		Sticker Assembly - Super Sorter		in.
2	1	025-0000-0522-00		Super Sorter Assembly		in.
3	1	060-2000-0023-00		Parts List - Super Sorter		in.
4	1	060-1000-0053-00		User Manual - Super Sorter		in.

Approved by: _____

Date: _____

REV.	DATE	DESCRIPTION	DRW	APPROVED



49	2	019-0000-0111-00	Flow Control (NOT SHOWN)
48	1	025-1000-0271-03	Preload Relay (NOT SHOWN)
47	1	010-2000-0001-00	Power Cable (NOT SHOWN)
46	1	025-1000-0365-01	RS232 Cable (NOT SHOWN)
45	AR	019-0000-0018-00	1/4" Air Line (NOT SHOWN)
43	1	013-0000-0288-00	7/16-20 Jam Nut
42	4	013-0000-0249-00	2-56 X 1/4 PHMS
41	4	013-0000-0020-00	4-40 X 1/4 BHSCS
40	1	018-0000-2430-00	Power Supply Mount
39	1	025-1000-0376-00	Power Supply Assembly
38	2	013-1000-0010-00	Female Screw Lock
37	1	013-3000-0022-00	Cord Grip Fitting
36	2	013-0000-0018-00	4-40 X 1/2 BHSCS
35	1	007-0000-0089-00	Power Entry
34	3	013-0000-0092-00	8-32 X 1 1/4 SHCS
33	2	013-0000-0306-00	8-32 X 1 3/4 SHCS
32	1	019-0000-0008-00	1/8 NPT to 1/4 Air Line Elbow
31	1	013-0000-0194-00	1/4-28 X 1/2 SSS
30	1	018-0000-1302A	Compression Overload Stop
29	1	018-0000-2334-03	Safety Shield, 2" Stroke
28	1	018-0000-2428-00	Power Supply Mount
27	1	018-0000-1745-03	Preset Station Stand
26	2	013-2000-0056	1/4 Washer
25	1	018-0000-1747-01	2" Platform
24	2	018-0000-1978-01	Adj. Handle Standoff
23	2	013-5000-0122	Adjustable Handle
22	1	018-0000-1749	Coupling Nut
21	1	019-0000-110	Air Cylinder
20	1	018-0000-1748	Preset Station Stop Block
19	1	018-0000-2331	Adjustable Stop Nut
18	1	018-0000-1750	Threaded Rod
17	2	018-0000-1746-02	Cylinder Mounting Bracket
16	2	013-0000-0154-00	5/16-18 X 1 1/4 SHCS
15	2	018-0000-1514	Ø.625 Washer
14	1	018-0000-0887-00D	
13	6	013-0000-0077-00	6-32 X 1/4 BHSCS
12	8	013-0000-0032-00	1/4-20 X 3/4 SHCS
11	1	009-0000-0004-00	1/4 NPT Inlet Nipple
10	3	019-0000-0009-00	1/8 NPT to 1/4 Air Line Elbow
9	2	019-0000-0121-00	1/8 NPT Breather Vent
8	1	019-0000-0003-00	Filter and Regulator
7	1	019-0000-0073-00	Pneumatic Valve
6	1	025-0000-0284-00	Front Panel Assembly
5	1	018-0000-0902-03A	Load Cell Mounting Plate
4	1	025-1000-0172-10	200 lbs Load Cell
3	1	018-0000-905	Lower Platform
2	1	018-0000-0902-02	Load Cell Mount
1	1	018-0000-2427-00	Lower Casting
ITEM NO.	QTY.	PART NO.	DESCRIPTION

UNLESS OTHERWISE SPECIFIED
DIMENSIONS ARE IN INCHES
TOLERANCES ARE:
.XX ± .01
.XXX ± .005



LARSON SYSTEMS INC.
10073 Baltimore St. NE PH. 763-780-2131
Mpls., MN 55449 FAX. 763-780-2182

MATERIAL	
FINISH	
HEAT TREAT	--

APPROVALS	DATE
DRAWN SMH	9/19/02
APPR.	
APPR.	

SDHT Sorter Assembly	
B	DWG. NO. 025-0000-0522-00
SCALE: NONE	
SHEET 1 OF 1	



Larson Systems Inc.
10073 Baltimore Street NE
Minneapolis, MN 55449-4425
www.larsonsystems.com

763-780-2131
1-877-780-2131
Fax: 763-780-2182
info@larsonsystems.com

